



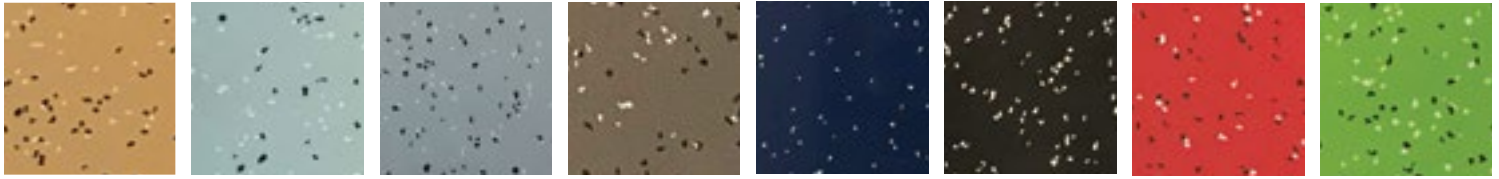
**NWR** | NORTH WEST RUBBER  
INNOVATIVE RUBBER PRODUCTS

# ELITE SYSTEM

BUILT FOR HEAVY LIFTS.  
PROVEN TO LAST

# COLOR OPTIONS:

## ReAction Elite



BEACH 667

STEEL 645

RHINO 612

PUTTY 675

COBALT 640

CHARCOAL 630

BRICK 620

SHAMROCK 655

## ProXL Elite



SMOKE 515

MAPLE 568

FOSSIL 512

ELM 575

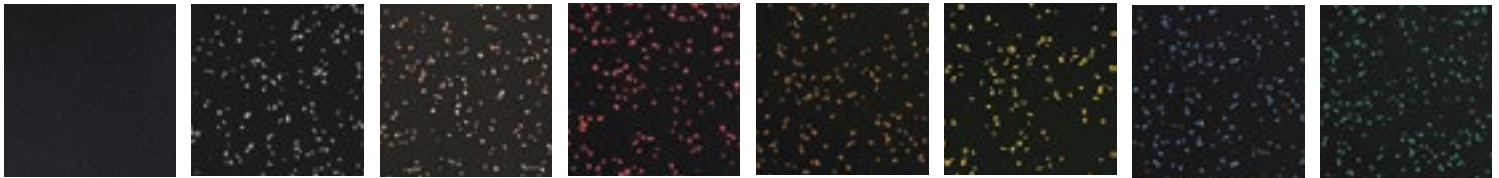
CHOCOLATE 560

GRAPHITE 530

INDIGO 541

FIRE 585

## Stamina Elite



BLACK 100

GREY 120

EARTH 190

RED 110

ORANGE 160

YELLOW 170

BLUE 130

GREEN 150

## Key Features & Benefits:

Custom colors are available upon request with a guaranteed Pantone® color match (+/- 1 Pantone).

Minimum order 500 sq.ft.



DURABLE



GRIP AND TRACTION



ANTI-MICROBIAL



SHOCK ABSORPTION



NON ABSORBENT



# THE ELITE STANDARD

SportFloor® Elite is a high-performance flooring system engineered to support intense weightlifting and training activities within high-traffic environments.

Our **ReAction/ProXL Elite System** is made up of three layers of rubber that provide resistance against cuts and dents, dissipate shock and stress, and provide energy in return. The ReAction/ProXL top layer also provides an aesthetic playing surface which can be customized to include logos with a guaranteed Pantone color match ( $\pm 1$  pantone).

Our **Stamina Elite System** is a durable, recycled rubber, dual layer system that provides excellent shock absorption, reduces impact sounds and effortlessly endures the high impact of heavy weights and fitness equipment.



**36%**  
FORCE REDUCTION

## TOP WEAR LAYER

An attractive and functional top wear layer that provides traction and safety for training activity.

## MID CUSHION LAYER

A mid cushion layer is designed to provide stability and structural integrity under impact stress.

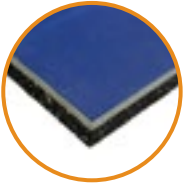
## BASE PAD

A bottom shock reducing layer which absorbs energy and softens sound transmissions.





ReAction Elite



ProXL Elite

### ReAction & ProXL Elite sizes:

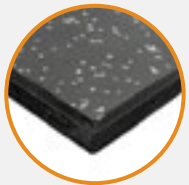
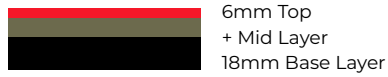
#### ELITE 11.5



#### ELITE 18



#### ELITE 24



Stamina Elite

### Stamina Elite sizes:

#### ELITE 20



#### ELITE 26



\*Custom thicknesses are available upon request. Minimum quantity may apply.

Scan to visit our website for more information:



T 604.859.2002  
F 604.859.2009  
TOLL FREE 1.800.663.8724  
[northwestrubber.com/sportfloor/elite/](http://northwestrubber.com/sportfloor/elite/)

